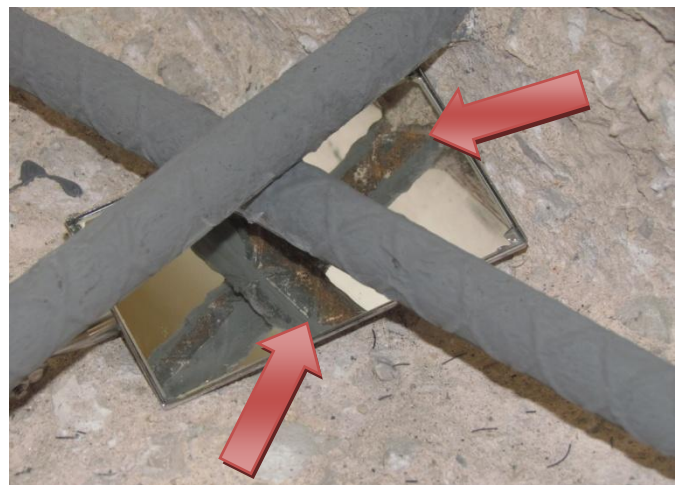




**When coating rebar, we need to make sure that we review and clean the entire bar, even the hard to reach areas, such as the underside. *We/Subcontractor should have a mirror on site to verify installation.***



**Existing steel which needed to be cleaned and coated was not properly cleaned (wire-wheeled) and coated on the underside...**



**Always plan ahead and discuss possible hard to reach areas of steel. Discuss how the steel must be prepared, how the steel will be cleaned and properly coated...Discuss what materials/tools will be needed in order to do the job correctly the first time.**

***Spend a few minutes prior to the start of the work with your team to coordinate proper tools and access requirements in order to avoid unnecessary re-work and delays in the schedule.***

